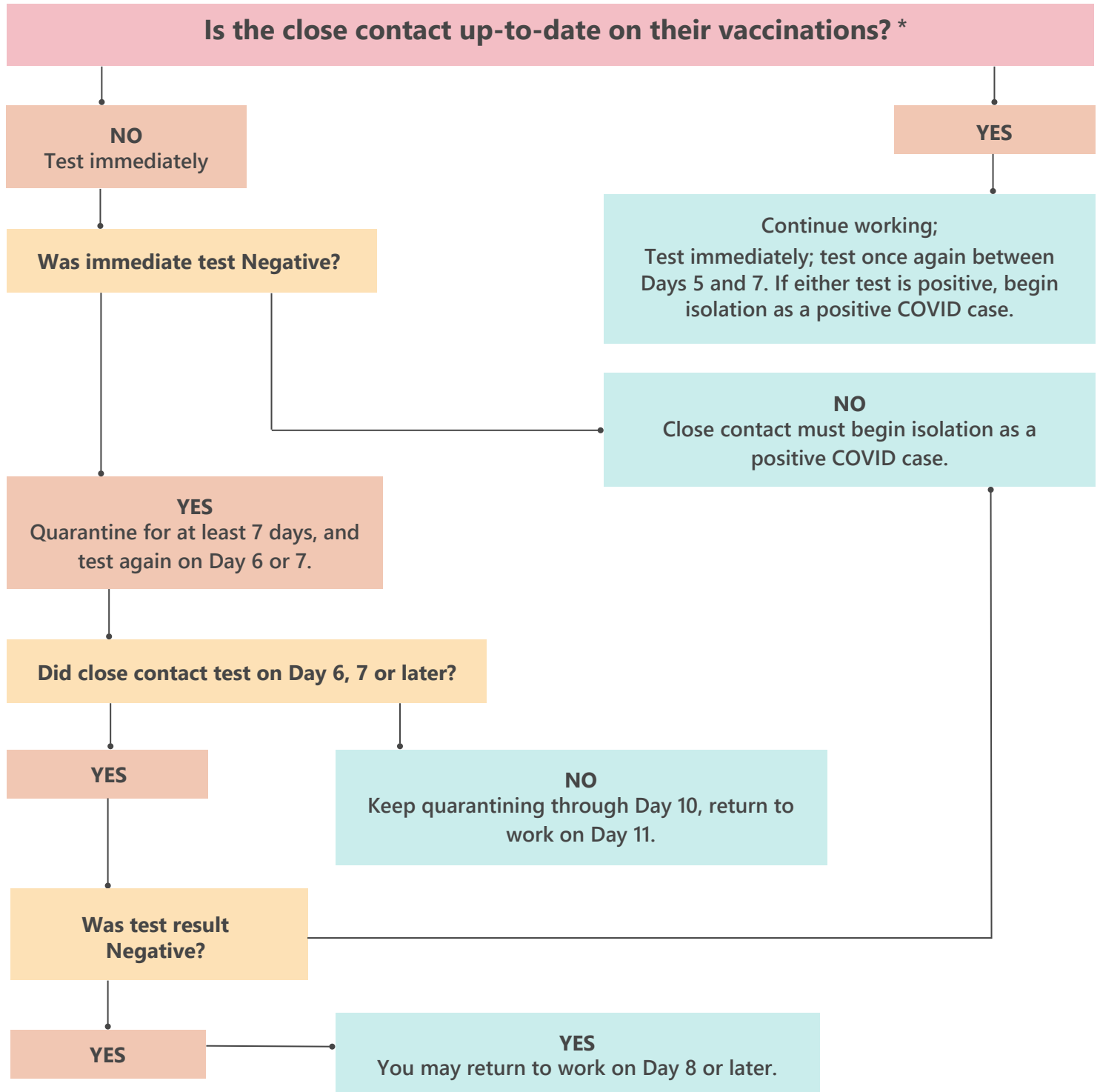


# Healthcare and Congregate Care Quarantine Guidelines County of Santa Clara

(Applicable to County healthcare facilities, including those not expressly covered by All Facilities Letter 21-08.7 and to congregate care facilities, including jails, correctional facilities, shelters, and other congregate care settings)

Use the chart below to determine the quarantine rules for any personnel who was a close contact to a confirmed COVID-19 case. For close contacts, Day 0 is the last date that an individual was exposed to a person with COVID-19. Day 1 is the first day after Day 0, and so forth.



\* Up-to-date means fully vaccinated and up-to-date on boosters for which they are eligible.